

Hope Anchor for April 2026

SUNDAY WORSHIP

Traditional Service 9AM
Sunday School/Youth Group 10AM
Contemporary Service 11AM

 HOPE LUTHERAN CHURCH

"YOU DID NOT CHOOSE ME
BUT I CHOSE YOU.
AND I APPOINTED YOU TO GO,
AND BEAR FRUIT –
FRUIT THAT WILL LAST –
SO THAT THE FATHER WILL GIVE YOU
WHATEVER YOU ASK HIM IN MY NAME."
-JOHN 15:16

211 Elton Adelpia Road
Freehold NJ 07728



Anchored in
Christ

Growing in Faith, Love and Service



www.youtube.com/hopefreehold



www.facebook.com/hopefreehold



www.instagram.com/hopefreehold



www.hopefreehold.org



www.hopefreehold.org/hopegrowshere

COUNCIL MEETING MINUTES

3-9-26

ACTION	COUNCIL MEMBER/ ATTENDEE
MTG OPENED	7:05 by Bill Unger
IN PERSON	Pastor Ed Kropa, Bill Unger, Laura Kropa, Dave Peters, Josh Renik-Staudinger, Brian McMillan, Mike Della Rosa, Pat Fensham, Judy Canfield
ZOOM	Matt Malanuk, Sarah Kozak, Jessica Somodi
ABSENT	Steve Weissi, Sue Hu
PRAYER/DEVOTION	Mike Della Rosa
ACCEPT PREVIOUS MINUTES	Motion by Pat to accept minutes; seconded by Brian Passed

REPORTS

<p>FINANCIAL SECRETARY JOB DESCRIPTION</p>	<p>Hope Lutheran Church Financial Secretary</p> <p><u>Responsibilities</u> Keep track and maintain permanent and confidential weekly church offerings, and electronic donations Issue annual tax statements Issue Hope Grows Here quarterly statements Prepare reports for Council, when necessary</p> <p><u>Websites</u> DonorPerfect https://logon.donorperfect.net/ Pay Pal https://www.paypal.com</p> <p><u>Key Skills:</u> <u>Accuracy:</u> High attention to detail in financial documentation. <u>Confidentiality:</u> Maintaining privacy of sensitive financial data. <u>Software Proficiency:</u> Experience with accounting software and spreadsheets. <u>Organization:</u> Managing multiple financial tasks and deadlines.</p> <p><u>Tools Needed from Cheryl:</u> Updated Church Directory</p> <ul style="list-style-type: none"> • Bill: Need more specific details for what exactly is required • Mike Della Rosa cannot do both jobs (Treasurer and Financial Secretary) • Pastor Ed and Sarah are currently exploring candidates
---	---

<p>TREASURY REPORT</p>	<ul style="list-style-type: none"> • Treasurer’s report distributed • Changes will be made to the way details are laid out in future financial reports <ul style="list-style-type: none"> ○ Transfer account receipts and disbursements will be positioned at other income and other expenditures in order to truly reflect church’s income ○ This is being done on advice of our accountant ○ Major expenditures, that have not been budgeted for (like chairs and rug) should not go through maintenance account but through contingency accounts • Insurance Premium <ul style="list-style-type: none"> ○ Check for \$27.491 for renewal of policies ○ New proposals will be in 2028 Cheryl says ○ Any changes may be due to parsonage appraisal ○ Josh said that Carol can look at policy • Check for Retainer <ul style="list-style-type: none"> ○ Bill made a motion to accept contract for \$5000 for Land Use attorney retainer ○ Brian seconded ○ All in favor
<p>HCS REPORT: Judy Canfield</p>	<ul style="list-style-type: none"> • Judy distributed Feb. and March Newsletters • REGISTRATION: <ul style="list-style-type: none"> ○ Brightwheel registration was a success ○ After Mommy and Me group was registered there were 269 online registrations ○ Receives 2-5 calls a day to be put on waiting list ○ Summer Camp registration link needs to be closed: 241 registered for 190 spots ○ VBS and Summer Literacy program registrations are also on same link ○ There have been 477 hits on the website TODAY and 891 site sessions • Scholastic Book Fair <ul style="list-style-type: none"> ○ \$8000 in sales resulted in ○ \$4000 in equipment or 25% in cash ○ Will probably take the equipment • Staff for next year <ul style="list-style-type: none"> ○ Kelly S is retiring ○ Patty Luke and Justine Dinino are former teachers who will be able to come back ○ Hiring assistants is ongoing • Floors <ul style="list-style-type: none"> ○ In classrooms need to be redone ○ Can we do small room over Easter break? ○ Do them a little at a time ○ The large classroom was done and it made a huge difference ○ Zeledon Reno (908-489-5520) • Other news <ul style="list-style-type: none"> ○ Backyard BBQ is 5/20/26

	<ul style="list-style-type: none"> ○ Judy going away (1st time during school session in 15 years!) Have a great time. Well deserved!
PASTOR REPORT	<ul style="list-style-type: none"> • Key Issues and Needs <ul style="list-style-type: none"> ○ Maintain symmetry between church/school; longtime members/new members ○ Space: see architectural report ○ Strategy: establish protocols for different processes <ul style="list-style-type: none"> ▪ New members ▪ Audits ▪ Taking attendance • Attendance comparison 2024-2025 <ul style="list-style-type: none"> ○ Based on incomplete data attendance is down 4% [5 weeks of missing data in 2025] ○ Problems with taking attendance at late service in particular ○ Pastor was not in attendance for a few services ○ Cancelled service due to snow ○ Need a better system for taking attendance • Weekly Offerings <ul style="list-style-type: none"> ○ Total giving is up 47.5% in 2025 from 2024 ○ Generosity initiative is working ○ Average per week is \$4771.27 • Pastoral Contacts <ul style="list-style-type: none"> ○ 563 this year so far ○ Includes phone calls, emails, Zoom meetings plus in person contacts at church, hospital and in the home • Continuing Education <ul style="list-style-type: none"> ○ 10 days

OLD BUSINESS

AUDIT	<ul style="list-style-type: none"> • Outside firm will cost between \$6000 and \$7000 • John Drager has 3 volunteers ready to go and wants to move forward • ELCA audit guidelines say we say we should have external audit completed since we have \$1.4 million dollars in income which is a lot to be responsible for
Mike	
Judy	<ul style="list-style-type: none"> • An external audit was completed by Curchin Group in 2018 [All recommendations of the group have been addressed and followed] • Cost between \$10,000 and \$12,000 • It was agreed that we should set up a protocol for audits alternating between internal and external at specific time intervals
Mike	<ul style="list-style-type: none"> • Do we authorize John to do this?
Council	<ul style="list-style-type: none"> • Yes

ARCHITECTURAL BUSINESS

From Pastor's Report	<ul style="list-style-type: none"> • Email from Jason Quenzel at Blue Rock <ul style="list-style-type: none"> ○ Brian from SR3 will reach out to Twp to get feedback on concept ○ Kim from TK Studio will review notes on changes to interior room demands and sizes ○ Wants to know if we have a Land Use Attorney <ul style="list-style-type: none"> ▪ Pastor Ed will let Jason know the name and contact info of Attorney ○ Wants group to look at Brian's slightly refined concept <ul style="list-style-type: none"> ▪ Changes so slight that we couldn't see them, Pastor Ed will ask for more description of changes
-----------------------------	--

NEW BUSINESS

ATTENDEE BRINGING UP NEW BUSINESS	TOPIC/ITEM
Judy	<ul style="list-style-type: none"> • Sign out front has faded so you can not see any of the letters • Josh has a friend that can redo or make a new sign
Sarah	<ul style="list-style-type: none"> • List of new members needed for service on March 15, 2026 • Service will celebrate anniversary of Hope Grows here and will include covenant signing • Sarah will make a video for the powerpoint that will be shown
Josh	<ul style="list-style-type: none"> • Name of Donors for Music Scholarship will be changed to Music Ministry
Pastor Ed	<ul style="list-style-type: none"> • Kudos to Judy and her team for the stellar reputation that HCS has

Sending Prayer: Pastor Ed

Meeting Dismissed: 8:00

Next meeting: April 13, 2026

Facilities Expansion Update: Status Report

Follow-up to the November Congregation Meeting

As an update: since the Congregational meeting in November (meeting minutes below) Council has been engaged with the Blue Rock corporation to develop a plan for facilities expansion. Planning to date has been centered on developing a preliminary plan that will allow Hope to further its community outreach and educational ministry.

Specifics from the **Phase 1 “Due Diligence”** period:

- **Conducted several meetings with the Blue Rock Corporation** This allows for an exchange of information / ideas on where we think we want to be from a need and design point of view. Included in our preliminary design concept are the following items:
- **Design and build a Hope Church extension.** This will be a “butler building” design concept. Total size approx. size 7,200 Sq Ft. **The following are our preliminary plans for what would be contained within the “butler building”:**
 - **Build a “multi-purpose room.”** This would be used by our Youth Group, Sunday School, and our school during the school week. We feel it would also be used to generate income by renting this facility when not in use by the school or church. This will allow us to conduct extensive activities along with sports activities within the space. Approx size 4,700 Sq Ft.
 - **Two Classrooms.** Approx size for each under review.
 - **A new bathroom(s) containing full bathroom facilities** that would be handicapped capable. Approx size under review.
 - **A “warm-up kitchen”** used for food preparation when the multi-purpose room is used by “external renters.” This will allow us to “lock-out” the rest of the Church building to external renters. Design and approx. size for under review.
 - **Storage room** for items related to the multi-purpose room. Approx. size for under review.

- **A new “mechanical room”** would be constructed for the new building addition. Approx. size for under review.
- Contacted John Rentschler (of Sonnenblick, Mehr & Licata) who is a **Land Use attorney** located Freehold Borough. It was recommended that we engage a land use lawyer to assist with the various Township and County legal requirements and approvals. This is the same group that was / is being used to represent our needs with the education trailer. They have a strong understanding of the Township and County rules and with Blue Rock will guide us through this process.
- **Costs to date.** As noted and approved in the November meeting notes our expected Phase 1-Due Diligence costs were determined to be \$11,750 (for civil engineering, architectural review, determine maximum square footage, assess township permits). As of this writing the billing to date from Blue Rock has been \$3,500.
- **Hope’s Congregation Council has unanimously approved this direction. Once we have a more detailed plan, specific internal extension designs and cost estimates we will share with the Congregation.**

Congregational Meeting November 16, 2025

(Extracted meeting minutes):

***Building Expansion Update and Discussion**

Sarah led the discussion about the status of possible building expansion. Hope Feedback Survey Results showed 62 responses with ranked selections for top priority and second priority. Results showed large multi-purpose room as top priority for 27 participants and second priority for 20 participants. Second priority tied with participants who wanted adding multiple classrooms with a remodel of the old fellowship hall.

Building expansion still in exploratory phase. Now considering alternative building type that would be more cost-effective. Previous architect quoted \$300-400 per square foot which was deemed too expensive. Council

halted further planning with the firm to avoid unnecessary expenses. Presently working with Blue Rock Construction which specializes in prefabricated (Butler Building) construction which is more cost effective. Company provides a design-build approach (one company handles design and construction). Vetted by Council members Matt (13 years experience with Turner Construction), and Brian (Project Manager construction company-hospital specialist).

Pre-Construction Services Proposal:

Phase 1-Due Diligence: \$11,750 (civil engineering, architectural review, determine maximum square footage, assess township permits.

Total Pre-Construction Services: Up to \$139,000 -not to exceed.

- *Church can stop at any point and only pay for work completed.

- *All deliverables belong to the church even if project stops.

- *Drawings can be sent to other contractors for competitive bidding.

Concerns Discussed:

- *Trailer for Kindergarten has limited time remaining due to township regulations.

- *New Jersey legislation requiring free public pre-K by 2029-30 may impact HCS enrollment.

- *HCS maintains advantages: Christian education, flexible hours, multiple schedule options.

- *Dave questioned who provides formal approval after the Due Diligence phase? He is concerned a subset of the congregation rather than then the whole congregation would make that decision. Pastor stated a special congregational meeting could be called to vote on proceeding beyond the \$11,750.

- *Concern about information timing. Cindy noted materials provided only 30 minutes before vote. Sarah apologized citing Pastor's hospitalization and death in family for delay.



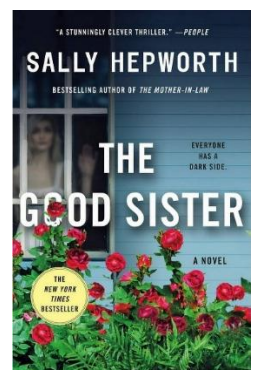
Meet the first Saturday of each month in Hope's Kitchen at 930am (April 4th)



Meet the second Saturday of each month in Hope's Kitchen at 9am (April 11th)



Our Next **BOOK CLUB** meeting will be: **Sunday, April 19th at 10am** in the *Kitchen* and we will be discussing....





Outreach Meal Schedule

Friday, April 24 –

Please sign up to help!

We are being asked to provide 120 meals for our community in need!

[Hope Lutheran Church: April 24 Outreach Meal](#)



Please let us know if someone in your family is graduating [HIGH SCHOOL](#) this year! They may qualify for the WOH Scholarship!

Growing Together in Faith

As we move into April, we joyfully reach the heart of our faith with the celebration of Easter! After walking through the season of Lent, we enter Holy Week, where we remember Jesus's journey to the cross. Then, after three days, we gather and share the wonderful news: Christ is risen! This special time is filled with happiness, renewal, and hope, reminding us that Jesus' victory over sin and death brings us new life. As a church family, we're excited to celebrate together and look forward to living out that joyful resurrection hope.

We also want to give a special congratulations to the 18 students who received their First Communion on March 22. We are so thankful to welcome them into this meaningful part of our faith life, and it has been a joy to walk alongside them as they learn and grow — a joyful reminder that Hope Grows Here!

Holy Week & Easter at Hope

We invite you to join us for this meaningful week in the life of the Church. Maundy Thursday invites us to the table, where Jesus shares the Last Supper and gives us the gift of Holy Communion. Good Friday guides us to the cross, where we reflect on Christ's sacrifice. Other services will be held at 7 PM. On Easter Sunday, we celebrate the resurrection with joy, music, and the promise of new life, and services are held at normal times. We hope you'll

join us as we come together to share in these powerful moments of worship. There will be no youth group or Sunday School between the services.

Sandwich Making for St. Peter's Community Lunch —

Tuesday, April 14 at 6:00 PM

Join us as we continue this important ministry, preparing sandwiches for those in need in our community. This simple act of service continues to have a meaningful impact, and people of all ages are welcome to participate.

[Hope Lutheran Church: April 2026 Sandwich Making for St. Peter's](#)

BBQ at Josh's — Saturday, April 18 at 4:00 PM

All youth and families are invited to come hang out for a relaxed afternoon together. We'll have food, games, and time outside our usual church setting. More details to come but mark your calendars!

Outreach Meal — Friday, April 24

We'll support our ongoing outreach meal ministry on April 24. Be sure to check the signup links to see how you can help—whether by donating food, helping prepare, or serving. This is a great way to support the organizations serving our community and to live out our call to serve others.

[Hope Lutheran Church: April 24 Outreach Meal](#)

Bear Creek Camp Registration Reminder

Registration for Bear Creek Camp is still open. Some Hope youth are planning to attend Session 5 (July 19–24). If your child is interested, there are still opportunities to sign up, and tiered pricing and scholarships remain available. Hope can also assist—please reach out to Josh for more information.

Looking Ahead: Summer Music & Serving Opportunities

Thanks to generous donations supporting our music ministry, our band will be shooting a music video this July. If you're interested in participating, please let Josh know! Everyone is invited!

We also really need help with technology during worship, and we sincerely appreciate those who continue to step up and serve in this way. There is always room for more voices and musicians in the band and choir, and we are grateful for anyone willing to share their talents.



We are accepting Book donations for the 2026 Book Sale!!! Please feel free to drop off your books for the next few months!

Introducing Our New “Pew Envelope for Gifts and Offerings”

As you may already be aware, Hope Lutheran Church is no longer using the numbered offering envelopes that were available for use by each church member/family.

The numbered envelopes automatically enabled our financial secretary to record the offering to the specific donor.

The pew envelope does not include a number, therefore we are asking everyone using these readily available envelopes to please enter the information requested on the envelope prior to presenting it to the collection plate. A pen is available for use in the small pocket on the back of the new chairs in the sanctuary.

By including this information on the envelope our counting teams and financial secretary will be sure to properly record each gift.

We are grateful for the generosity and support provided by everyone to the many missions of Hope Lutheran Church.

Hope Lutheran Church of Freehold

PEW ENVELOPE

FOR GIFTS AND OFFERINGS

Visitor

Regular Offering

Special Offering

Amount \$ _____

Name _____

Address _____

The Hubbard Press

For the Congregation,
Michael Della Rosa



Freehold Area **OPEN DOOR**

Most Wanted List

Help us stock our shelves with these items:

Salt & Pepper Sets

Salad Dressing

Ketchup

Mayonnaise

Mustard

Cooking Oil**

Vinegar**

BBQ Sauce

Syrup

Bread Crumbs**

Orzo/Pastina

Egg Noodles

Jarred Pasta Sauce

Bagged Flour**

Bagged Sugar**

Juice Boxes/Pouches

64oz. Juice Bottles

Sardines

Spam

Canned Chicken

Canned Beef Stew

Canned Salmon

Canned Yams

Apple Sauce

Granola Bars**

Grits

Instant Coffee

Ground Coffee

Sugar Packets

Baby Wipes

Tissues

Toilet Paper

Laundry Detergent**

Dish Soap

No jumbo or bulk sized items

Nonperishable Donations - Monday through Thursday 10:00 am to 2:00 pm at our new location located at 80 Throckmorton St.

Kindly DO NOT leave anything outside when we are not here.
Items left outside will be thrown away.

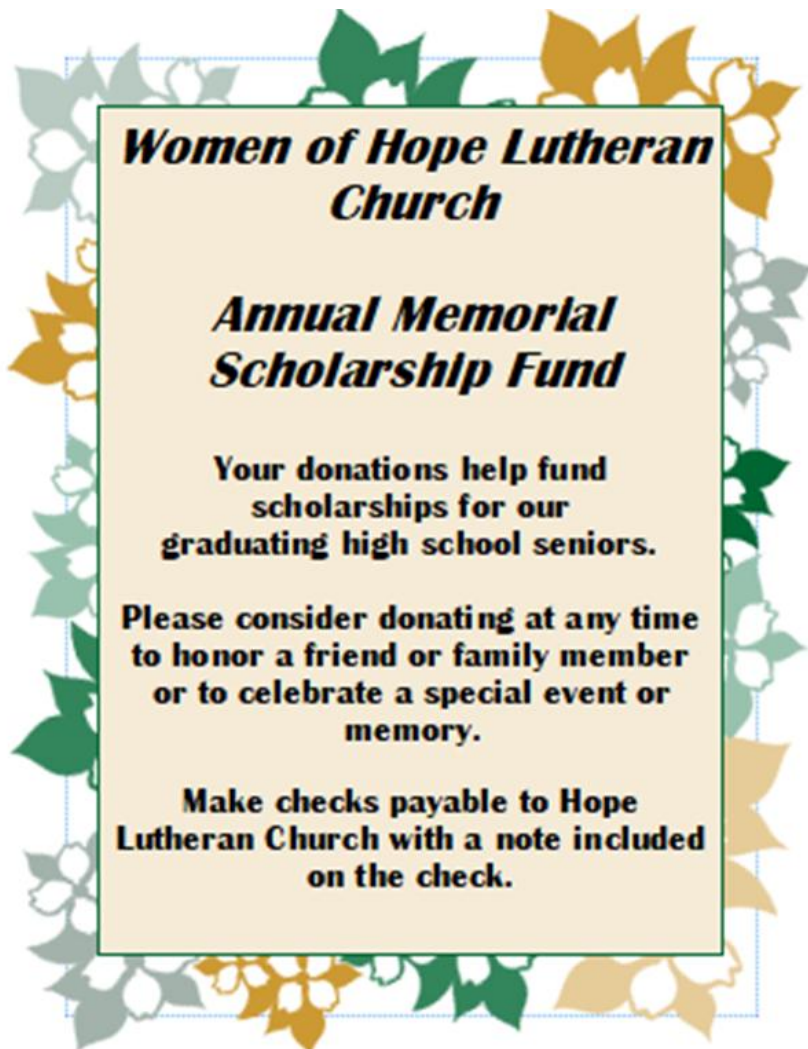


HOPEFREEHOLD.ORG/
HOPEGROWSHERE

DONATE TO
SUPPORT HOPE



HOPE LUTHERAN IS A NON-PROFIT 501 (C) (3) TAX-EXEMPT ORGANIZATION.
MEANING GIFTS TO HOPE LUTHERAN CHURCH ARE TAX DEDUCTIBLE, AND
SUPPORT THE VARIOUS MINISTRIES AT HOPE LUTHERAN CHURCH.



***Women of Hope Lutheran
Church***

***Annual Memorial
Scholarship Fund***

**Your donations help fund
scholarships for our
graduating high school seniors.**

**Please consider donating at any time
to honor a friend or family member
or to celebrate a special event or
memory.**

**Make checks payable to Hope
Lutheran Church with a note included
on the check.**

HLC SUNDAY SCHOOL

2025-2026

CLASSES/CURRICULUM

- Classes take place Sunday Mornings from 10am-10:45am
 - 3 year olds-Second Grade meet in room 1
 - Third Grade-Sixth Grade meets in room 3
- We use the Spirit and Truth Curriculum, which follows the church calendar.
- There is no cost for Sunday School, but we always accept donations! Our PayPal e-mail is is HopeLutheran17@gmail.com
- Parents are welcome and encouraged to stay for fellowship during Sunday School hour.

CONTACT INFORMATION

Jess Somodi

Sunday School Director

JessicaAcker@Gmail.com

732-832-1585

Please contact for more info or to register!

IMPORTANT DATES

- September 7- Rally Day and Backpack Blessing
 - (In Person Registration and Sunday School Begins)
- November 30- Family Advent Craft
- December 28-No Sunday School
- January 4-No Sunday School
- March 29- Easter Egg Hunt
- April 5- No Sunday School
- May 17- Family Bingo/Last Day of Sunday School

VOLUNTEERS

We could always use help in Sunday School! No experience required! Please reach out to Jess if you are interested.

Scan for more information
or to register!





Here is an idea of SOME of the things we have planned for our upcoming church year of September 2025 – June 2026

April

April 2 – Maundy Thursday

April 3 – Good Friday

April 5 – Easter Sunday

No SS/Youth April 5

April 24 – Outreach Meal

June – August

June 21 – Donuts with Dad

VBS WEEK

August 10 – August 14

May

May 10 – Muffins with Mom

May 17 – BINGO! Last day of SS and Youth!

May 24 – Summer Schedule – One Service @ 930am

Congregation Meetings

One in *November* and one in *June* each year – dates to be determined

Tentative Date for June Congregation Meeting – June 14th after service

NUMBERS HAVE NAMES,
 NAMES HAVE STORIES,
 EVERY STORY MATTERS AT **HOPE**



AVERAGE WEEKLY OFFERINGS



2025

2024



46.5% INCREASE

HLC EDUCATION MINISTRY



43

SUNDAY SCHOOL &
 YOUTH ENROLLMENT



12

BAPTISMS
 2025



6

CONFIRMATIONS
 2025



67

2025 VBS
 ENROLLMENT

OUTREACH AND SOCIAL MINISTRIES



\$66,000

TOTAL DONATED TO OUTREACH MINISTRIES

ELCA MISSION SUPPORT, OPEN DOOR, EHAP, LUTHERAN SOCIAL
 MINISTRIES, LUTHERAN WORLD RELIEF, LUTHERAN DISASTER
 RESPONSE, CROP HUNGER WALK, FREEHOLD TOWNSHIP HS



10

OUTSIDE GROUPS
 AT HOPE



3,500+

SANDWICHES MADE
 FOR COMMUNITY LUNCH



350+

PLATES SERVED AT
 OUTREACH MEALS

HOPE CHRISTIAN SCHOOL



194

2024-2025
 ENROLLMENT



44

MOMMY & ME



225

SUMMER CAMP &
 LITERACY



21

STAFF MEMBERS



50

BEFORE &
 AFTERCARE

PLANNED AND ESTATE GIVING

As we enter into the “tax return season” it is a perfect time to give some thought to estate planning. Planned and estate gifts are perfect ways for giving your church monetary support for “tomorrow.” These monetary gifts also provide the giver with the opportunity to pinpoint the areas of church life that interest them. Charitable contributions can significantly reduce the taxable value of your estate, potentially lowering estate taxes and maximizing the inheritance for your heirs. Donations made through your estate plan can qualify for tax deductions, providing a financial benefit to your estate and ensuring more of your assets are passed on to your loved ones and the causes you care about. There are many avenues to include Hope in your estate planning:

- Remember Hope in your will!
- A bequest to Hope is an enduring statement of faith!
- Support the people and causes you love through your will!
- Endow your church contribution through your will!
- Give a tithe of your estate for Gods church!
- A gift freely given for the benefit of all!
- A bequest to your church. An everlasting gift!
- Make your church the beneficiary of an IRA or Retirement plan!
- Use life insurance for charitable giving!

Planned giving provides resources that allow the church to make differences in the lives of their members and others whom they minister to in the future.

Bill Unger, for the Hope Council

HOPE FAMILY PRAYER LIST

Rebekah Heilman's sister, **Rachel**, who is being deployed to the Middle East; **Kevin Cotta**, local scout leader for **Joey Mancini's** troop could use prayers for health and healing; **Steve Keller's** mother and step-father need prayers...

Roy Bruns; **Cat Burger's** friend, **Joe Morcos**; **Jeanette Kropa**; **Adriana Maria**, teammate of **Autumn Hedin**; **The Costantino Family**, family friends of the **Somodi Family**; **Rita Corn's** father in law, **Jules Corn**; **John** and **Sharon Black**; **Josh Staudinger** family friends, **Marion Pierce** and **The Vega Family**; **Kropa Family** cousin, **Sharon Laskosky**; **Cat Burger's** friend, **Charlotte**; **Jeannay Murphy's** family members, **Rosemarie A**, **Rosemarie L** and **Lila Hughes**; **Kira Noseworthy**; **Tracey Radosti's** sister; **Charles Sona**; **Unger Family Friends**, **Helene** and **Judy**; **Rob Iadanza**; **Bob Robinson**; **Ashley Rosenberg**; **Gerry Bergh**; **Ryan McAuly**, **Kless Family** nephew; **Courtney Volk**; **Deloris Laub**; **Dolores O'Brien**; **Marilyn Wolter**, **Cindy Lynch's** mother; **Margaret Holen**; **Jim Mulligan**; **Dani Hulsart** family friend of the **Donmoyer Family**; **Pam Renouff**;

Those serving as first responders and in the armed services.

CONGREGATION COUNCIL

President	Bill Unger
Vice President	Sarah Kozak
Secretary	Laura Kropa
Education	Jessica Somodi
Financial Secretary	Sue Hu
Open Door Alternate	Pat Fensham
Architecture Team	Brian McMillin
Architecture Team	Matthew Malanuk
	Dave Peters
	<u>NON COUNCIL MEMBERS</u>
	<u>HOLDING POSITION/S</u>
Treasurer	Mike Della Rosa
Open Door	Rebekah Heilman
Worship	Jackie Peters

Volunteers NEEDED

**VACANT POSITIONS –
Fellowship, Support, Outreach, Social Ministries,
Maintenance, New Member Coordinator**

**These positions have been VACANT and not filled by a
volunteer in over 4 YEARS!**

	<i>Assisting</i>	<i>Altar</i>	<i>Counting</i>
<i>April 5</i>	Debbie	Diane & Deb	Pat & Debbie
<i>April 12</i>	Bill	Jeannay	Sarah & Michelle
<i>April 19</i>	Rita	Barbara	Bill & Barbara
<i>April 26</i>	John	Rachel	Mike & Bonnie
<i>May 3</i>	Tom	Christine	Matt & Chris
<i>May 10</i>	Rebekah	Rebekah	Sue
<i>May 17</i>	Sheth	Pat	Pat & Debbie
<i>May 24</i>	Ken	Diane	Mike
<i>May 31</i>		Debbie	Mike & Bonnie

Traditional Acolytes –

Cara S and Melody B

Contemporary Acolytes –

Hedin Girls, Joey M and Ryan S

<u>USHERS</u>	<i>9am</i>	<i>11am</i>
<i>April 5</i>	Mark & Ken	Wayne & Dominick
<i>April 12</i>	Matt & Andrew	John & Chuck
<i>April 19</i>	Bill & Chris	Diane & Matt S
<i>April 26</i>	Matt & Mark	Wayne & Dominick
<i>May 3</i>	Rebekah & Chris	Chuck & John
<i>May 10</i>	Mark & Ken	Diane & Matt S
<i>May 17</i>	Bill & Andrew	Wayne & Dominick
<i>May 24</i>	Matt & Rebekah	Chuck & John

**One service @ 930am begins
Sunday, May 31**

<u>GREETERS</u>	<i>9am</i>	<i>11am</i>
<i>April 5</i>	Sue D	Kathy
<i>April 12</i>	Suzy C	Sarah
<i>April 19</i>	Barbara	Janine
<i>April 26</i>	Jill	Sue D
<i>May 3</i>	Sue D	Kathy
<i>May 10</i>	Suzy C	Sue D
<i>May 17</i>	Pat	Diane
<i>May 24</i>	Jill	Sarah

**One service @ 930am begins
Sunday, May 31**

April



2026

Sunday	Monday	Tuesday	Wednesday	Thursday	Friday	Saturday
			1	2	3	4
			7p – 12 Step	5p – Counseling 7p – 12 Step 7p – Maundy	7p – 12 Step 7p – Good Friday	930am – WOH 12p - Counseling
5	6	7	8	9	10	11
Easter Sunday 9a – Traditional Fellowship Hour 11a – Contemporary	530p – WW Group	7p – Zoom Yoga 730p - Choir	7p – 12 Step	5p – Counseling 630p - Audit 7p – 12 Step 7p – Praise Band	7p – 12 Step	9am - GOM 12p - Counseling
12	13	14	15	16	17	18
9a – Traditional 10a – SS/Youth 11a – Contemporary 630p - Confirmation	530p – WW Group 7p – Council	6p - Sandwiches 7p – Zoom Yoga 730p - Choir	6p - Finance 7p – 12 Step	5p – Counseling 7p – 12 Step 7p – Praise Band	7p – 12 Step	12p – Counseling Josh BBQ
19	20	21	22	23	24	25
9a – Traditional 10a – SS/Youth Book Club Meets 11a – Contemporary	530p – WW Group	7p – Zoom Yoga 730p – Choir	7p – 12 Step	5p – Counseling 7p – 12 Step 7p – Praise Band	Outreach Meal 7p – 12 Step	12p – Counseling
26	27	28	29	30		
9a – Traditional 10a – SS/Youth 11a – Contemporary 630p - Confirmation	530p – WW Group	7p – Zoom Yoga 730p - Choir	7p – 12 Step	5p – Counseling 7p – 12 Step 7p – Praise Band		

APRIL 2026 YOUTH CALENDAR

Sunday	Monday	Tuesday	Wednesday	Thursday	Friday	Saturday
<p>Service hour opportunities for youth and confirmands! If you have any questions, please feel free to reach out our team! Faith Formation Director: Josh Staudinger (josh@hopefreehold.org) Youth Group Leader: Inhyoung Chae (lstaudinger@gmail.com)</p>			1	2 Maundy Thursday Service 7PM	3 Good Friday Service 7PM	4
5 Easter Sunday No Youth Group	6	7 CHOIR PRACTICE 7:30PM	8	9 BAND PRACTICE 7PM	10	11
12 Youth Group 10am	13	14 Sandwich Making for St. Peters 6PM CHOIR PRACTICE 7:30PM	15	16 BAND PRACTICE 7PM	17	18 BBQ at Josh's 4PM
19 Youth Group 10am	20	21 CHOIR PRACTICE 7:30PM	22	23 BAND PRACTICE 7PM	24 OUTREACH MEAL 4PM	25
26 Youth Group 10am	27	28 CHOIR PRACTICE 7:30PM				

